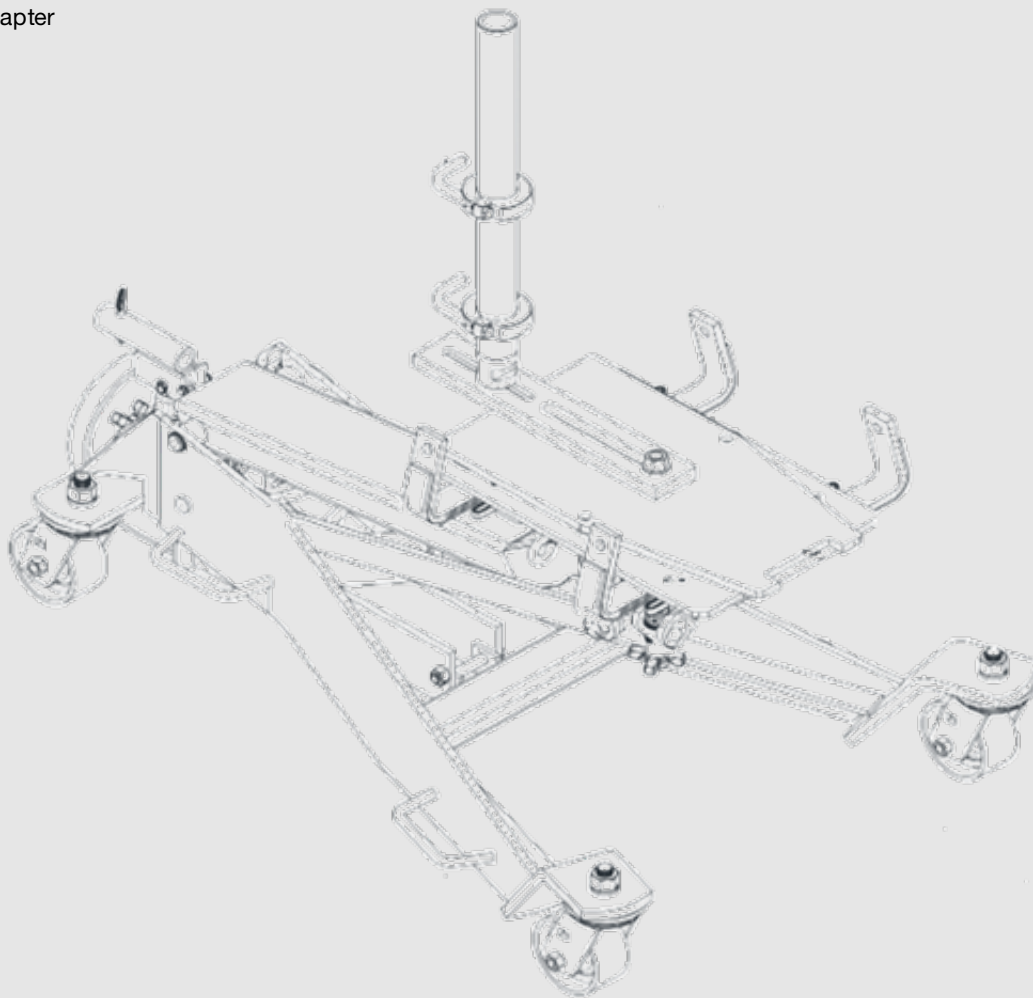


## MAHLE CAD-MDDIF

EN

Operation Manual  
Medium Duty Differential  
Adapter





**EVERY PERSON WHO OPERATES THIS  
EQUIPMENT NEEDS TO KNOW AND  
UNDERSTAND ALL OF THE INFORMATION IN  
THIS MANUAL – FAILURE TO DO SO COULD  
RESULT IN SERIOUS INJURY OR DEATH.**

**READ THIS MANUAL  
CAREFULLY AND  
RETAIN FOR YOUR  
RECORDS**

# Contents

---

<b>1. Foreword.....</b>	<b>4</b>
1.1 From the manufacturer.....	4
<b>2. Symbols Use.....</b>	<b>4</b>
2.1 Signal words.....	4
<b>3. Responsibilities .....</b>	<b>5</b>
3.1 Receiving inspection .....	5
3.2 Owner and/or operator responsibilities.....	5
<b>4. Operation.....</b>	<b>6</b>
4.1 Removing a Differential .....	6
<b>5. Notes.....</b>	<b>7</b>

# 1. Foreword

## 1.1 From the manufacturer

Thank you for your purchase. To complement the offering of A/C, fluid and nitrogen service equipment, MAHLE Service Solutions has partnered with Gray Manufacturing to provide the highest quality hydraulic and pneumatic equipment available for the professional service technician. This equipment adheres to high standards promised in the MAHLE guarantee including the assurance of innovation and reliability that comes with the Gray Manufacturing name. Please contact MAHLE Service Solutions' customer service at (800) 468-2321 or tech.mss@us.mahle.com with any comments or questions.

# 2. Symbols Use

## 2.1 Signal words

Signal words call attention to a safety message or messages, or a property damage message or messages, and designate a degree or level of hazard seriousness. Signal words used in this manual include:

Keyword	Probability of occurrence	Severity of danger if instructions not observed
<b>DANGER</b>	<b>Immediate</b> impending <b>danger</b>	<b>Death</b> or <b>severe</b> injury.
<b>WARNING</b>	<b>Possible</b> impending <b>danger</b>	<b>Death</b> or <b>severe</b> injury
<b>CAUTION</b>	Possible <b>dangerous</b> <b>situation</b>	<b>Minor</b> injury
<b>NOTICE</b>	Possible <b>damage to</b> <b>property</b>	<b>Possible property</b> <b>damage</b>

## 3. Responsibilities

---

### 3.1 Receiving inspection

Before attempting to operate this equipment, thoroughly read and understand this manual. Completely remove all tape and packaging. Inspect the equipment immediately upon delivery. If shipping damage is evident, inform the delivering carrier immediately and contact the manufacturer using the contact information on the back cover of this manual.

### 3.2 Owner and/or operator responsibilities

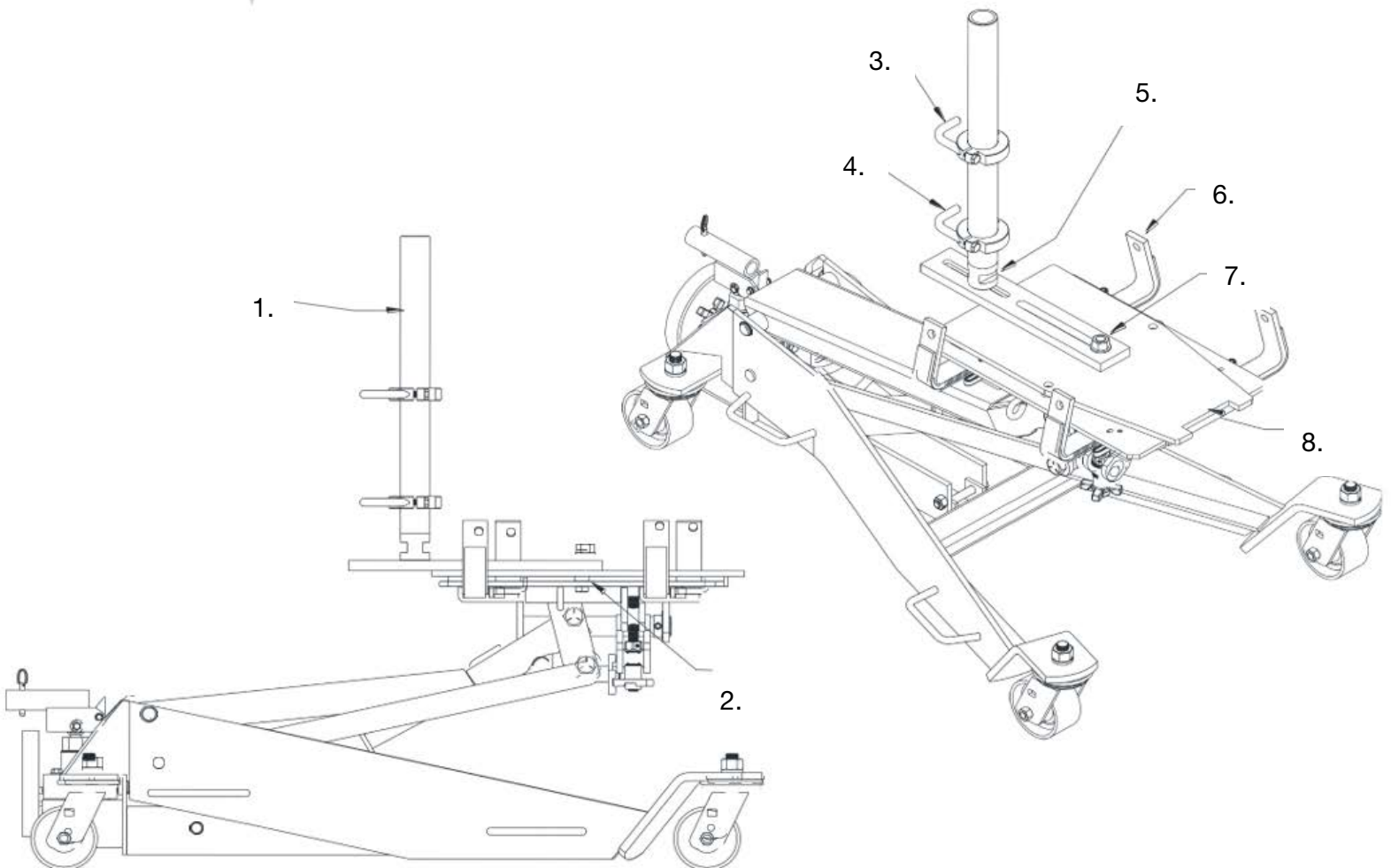
The owner of this equipment must read these instructions and maintain them for future reference and for instructing any other users of the equipment. The owner is responsible for keeping all warning labels and instruction manuals legible and intact. Replacement labels and literature are available from the manufacturer. The owner must never authorize or allow anyone to use this equipment until the operator has read and understood the information in this manual and on the accompanying labeling on the equipment itself.

If this equipment is being used in an occupational setting (or workplace), the employer should ensure that all personnel working with and around the equipment know of the risks associated with its use. Personnel involved in the use and operation of this equipment shall be careful, competent, trained, and qualified in the safe operation of the equipment and its proper use when servicing motor vehicles and their components. Safety information provided with this equipment should be emphasized by the employer and understood by each employee. The employer must make this manual available to all personnel using this equipment and all personnel must read and understand the contents of this manual. If the operator is not fluent in English, the manufacturer's instructions and warnings shall be read to and discussed with the operator in the operator's native language by the employer, making sure that the operator comprehends its contents and observes the proper procedures for use of this equipment.

## 4. Operation

### 4.1 Removing a Differential

1. Select the proper pin for the size of differential you are working on.
2. Position the adapter as shown and install the 1/2- 13UNC cap screws through the head plate into the adapter and tighten.
3. Remove the yoke support collar before installing the differential onto the adapter. Once the differential has been placed on the adapter, this support collar must be replaced and positioned to prevent the differential from moving.
4. Position the collar to support the differential so that it's bolt circle flange is vertical to the adapter plate.
5. Wrench flats from for loosening the vertical support bar so that it can be positioned. Once the vertical support bar is positioned it should be tightened to prevent any further movement. Requires a 15/16 open end wrench
6. Remove brackets
7. 5/8 – 18 hex nut. Loosen to position the vertical support bar. Once vertical support bar is positioned, tighten the nut securely.
8. Differential bolt circle flange should be positioned to nest in this opening
9. Use tie down strap when necessary to secure the differential to the adapter.



## 5. Notes



**MAHLE Aftermarket Inc.**

916A West State Street,  
St. Johns, MI 48879

Phone: (800) 468-2321

Fax: (717) 755-8304

E-mail: [tech.mss@us.mahle.com](mailto:tech.mss@us.mahle.com)

[www.servicesolutions.mahle.com](http://www.servicesolutions.mahle.com)