

# TOP TEMPLATE K-1380-ADPTR225

## Instructions:

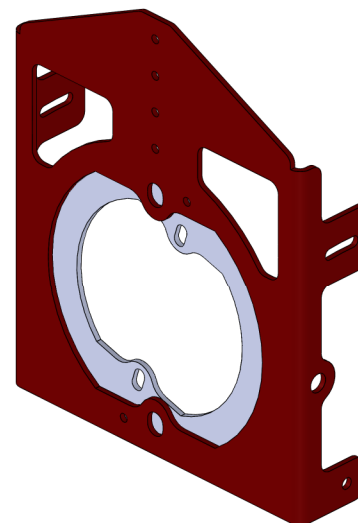
Cut out the provided templates and align to corresponding features on Disc Brake Hub Handler's Mounting Plate. Refer to image for approximate location.

Drill one clearance hole for a 3/8" fastener. 13/32" is the recommended drill size.

Loosely bolt in place using the first drilled hole and mark location for second hole then drill.

Reducer plate should be mounted on the inner surface of the Mounting Plate as shown.

Use one 3/8" bolt, one 3/8" hex nut and two washers at each position.



# BOTTOM TEMPLATE K-1380-ADPTR225