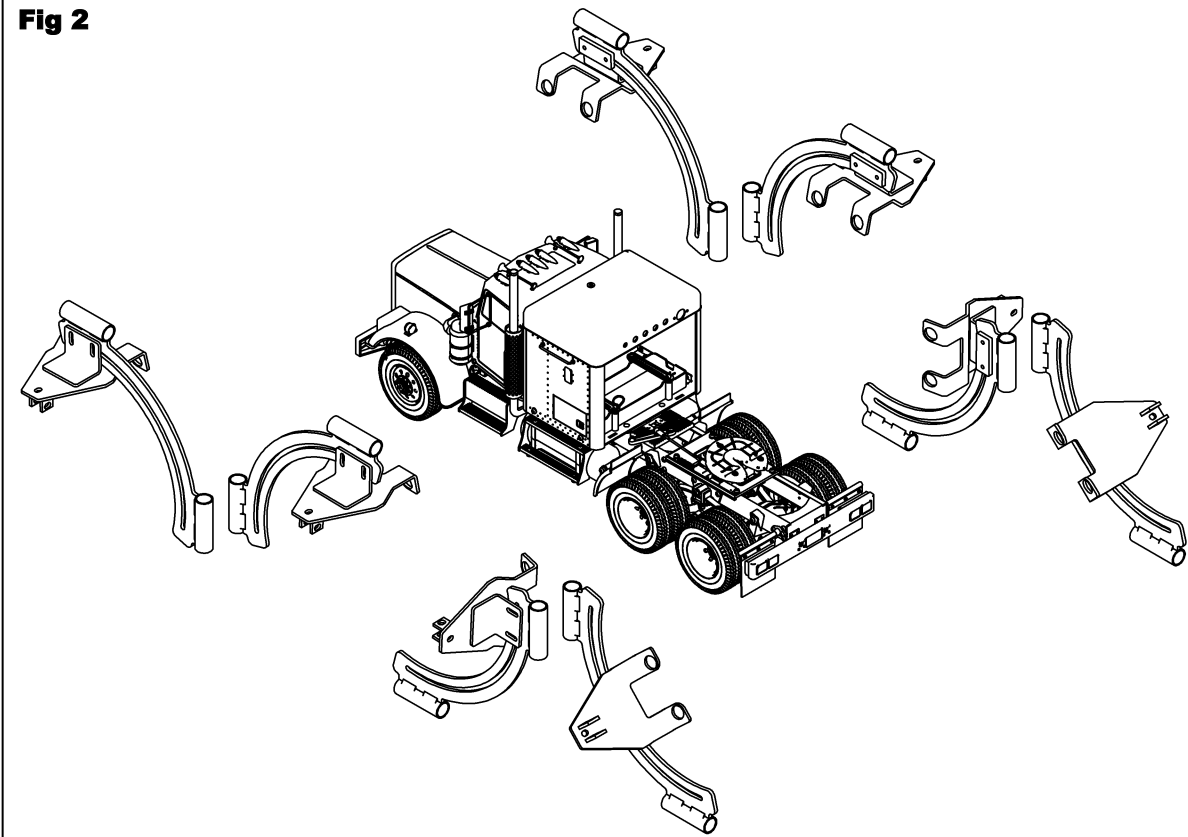
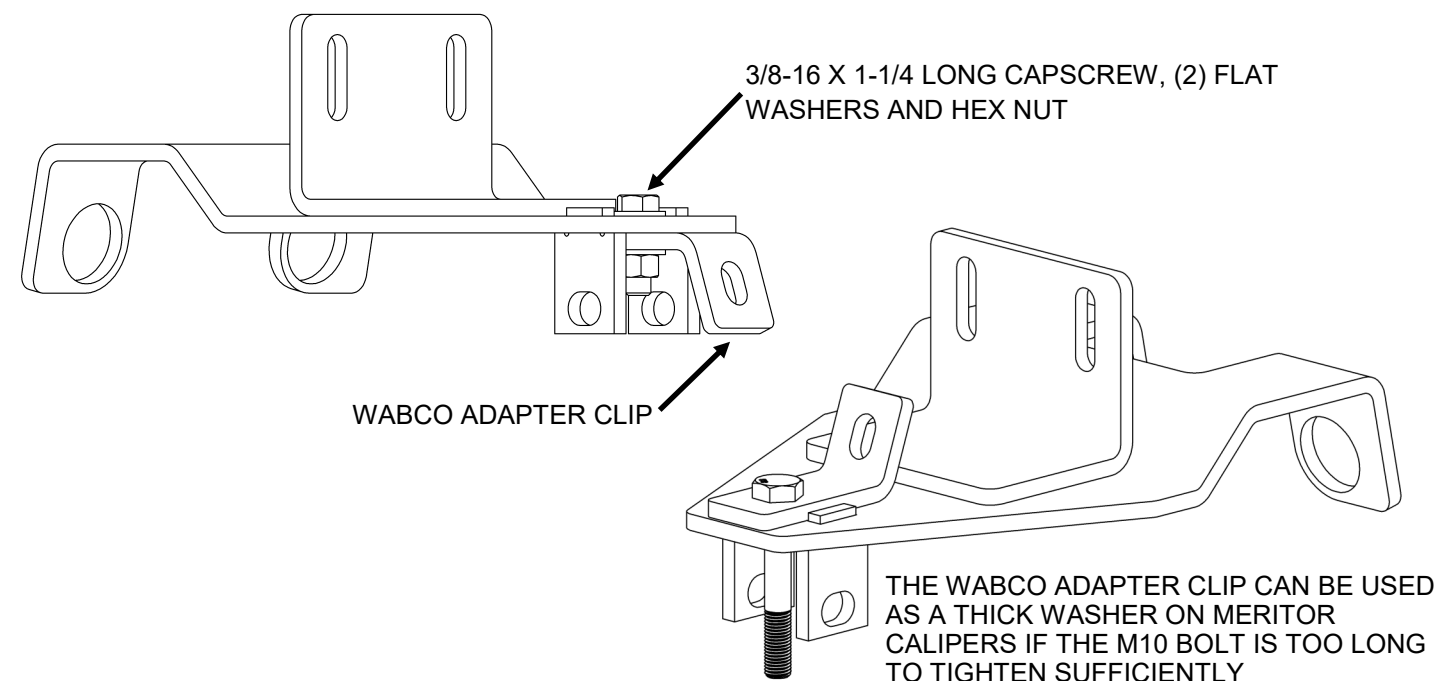


Fig 2



Wabco Adapter Clip now included.

Install the Wabco adapter clip to the K-1345-1 Mounting Plate as shown below. Loosely assemble the adapter clip and tighten the 3/8 bolt and hex nut only after mounted to the Wabco caliper. The M10 keeper bolt and Wabco clip must be positioned and tightened sufficiently enough to prevent excess movement of the K-1345-1 Mounting Plate on the caliper. Always test to ensure the Mounting Plate is captured by vigorously shaking it before attempting to remove the caliper with this tool. Contact Kiene directly with any questions.



K-1345 Instructions.pub - 2/21/24

KIENE K-1345 DISC BRAKE CALIPER HOIST

ASSEMBLY AND OPERATING INSTRUCTIONS

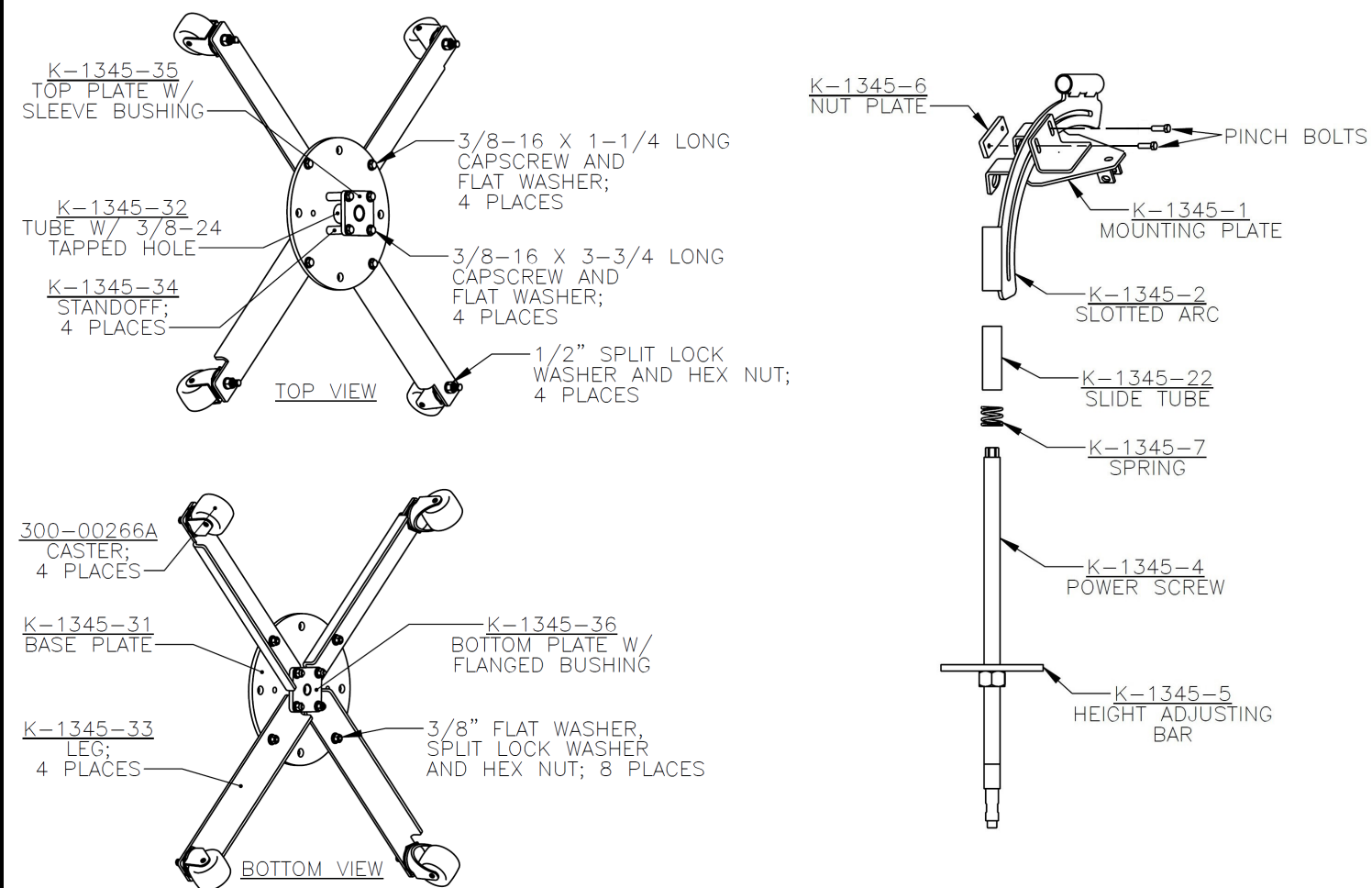


KIENE
DIESEL ACCESSORIES, INC.

UNIQUE
TRUCK EQUIPMENT

WWW.UNIQUETRUCK.COM
6165318868

K-1345 DISC BRAKE CALIPER HOIST - PARTS ILLUSTRATION

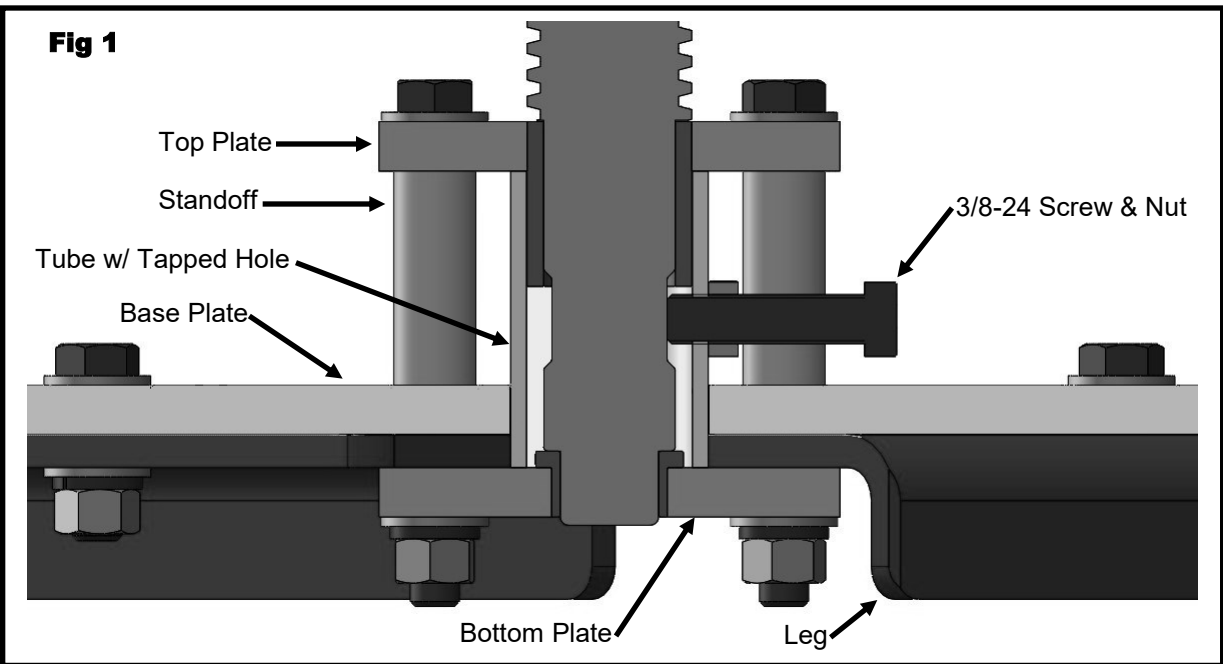


Refer to the parts illustration to make certain all parts have been received and no damage has occurred.

ASSEMBLY INSTRUCTIONS:

- Assemble base starting with (4) 3/8-16 X 3-3/4" long cap screws and washers thru Top Plate, Standoff, Base Plate, Leg and Bottom Plate with K-1345-32 Tube w/ Tapped Hole pinched between Top and Bottom Plate as shown in Figure 1. Install 3/8" flat washer, split lock washer and hex nut loosely at this step.
- Install (4) 3/8-16 X 1-1/4" long cap screws and flat washers thru Base Plate and the second hole in the Legs. Loosely fasten with 3/8" flat washer, split lock washer and hex nut.
- Assemble Casters onto Legs and fasten tightly with 1/2" split lock washer and hex nut.
- Set base onto the Casters and insert Power Screw into Top Plate making sure the smaller diameter pilot is fit into the flanged bushing in the Bottom Plate. Periodically rotate the Power Screw while tightening the (4) 3/8-16 X 3-3/4" long cap screws evenly until tight and the Power Screw turns freely. Repeat this process if necessary until the Power Screw turns freely in the Top and Bottom Plate bushings. Tighten remaining (4) 3/8-16 X 1-1/4 long cap screws securing the Legs.
- Attach Mounting Plate to Slotted Arc with (2) M10 X 30mm long hex flange bolts. The Slotted Arc must be pinched between the Mounting Plate and Nut Plate and oriented as shown in the Parts Illustration.

(continued on next page)



- Thread the Height Adjusting Bar down the Power Screw and then install Spring, Slide Tube and Slotted Arc with Mounting Plate.
- Install the 3/8-24 (fine pitch) X 1-1/2" long cap screw and hex jam nut into the Tube w/ Tapped Hole and tighten against the Power Screw. Run hex jam nut down to prevent backing out.

OPERATING INSTRUCTIONS:

- Remove the brake pad keeper and brake pads. Make sure there is enough slack on the ABS cable.
- The Mounting Plate will accommodate different caliper positions without being removed from the Slotted Arc as shown in Fig 2 on next page. Simply slide off and reposition on Power Screw.
- Run the Height Adjusting Bar down to allow the Slotted Arc freedom to slide up and down the Power Screw within a reasonable range needed to attach the Mounting Plate to the caliper.
- Loosen the M10 Pinch Bolts so the Mounting Plate can slide. Hold the Mounting Plate with one hand and the tube of the Slotted Arc with the other hand. This will allow you to quickly position the plate by sliding the Slotted Arc's tube up and down on the Power Screw without using the Height Adjusting Bar.
- Guide the Mounting Plate into place by positioning the two large open holes over the brake chamber's studs and nuts. (Use the supplied 5/8" bolts, washers and hex nuts for calipers with brake chamber removed. Install the 5/8" bolts with the stud, washer and nut facing out to mimic the brake chamber's stud, washer and nut.)
- Secure the Mounting Plate to the brake pad keeper's clevis by re-using the stock clevis pin, or using one of the supplied M10 X 70MM long bolts and hex nut. Always test to ensure the Mounting Plate is captured by vigorously shaking it before attempting to remove the caliper with this tool. Use the WABCO adapter clip as a thick washer if the M10 bolt is too long to be tightened sufficiently on Meritor calipers. See illustration on next page.
- With the Mounting Plate securely fixed to the caliper, run the Height Adjusting Bar to put compression on the spring and tighten both Mounting Plate Pinch Bolts.
- The caliper mounting bolts may now be removed and caliper swung aside.
- The 3/8-24 cap screw may also be slightly loosened to let the Power Screw rotate, but not pull out of the bushing. In this way the Height Adjusting Bar can be held while driving up and down with an impact wrench on the top of the Power Screw. This can be helpful for steer axle calipers.